



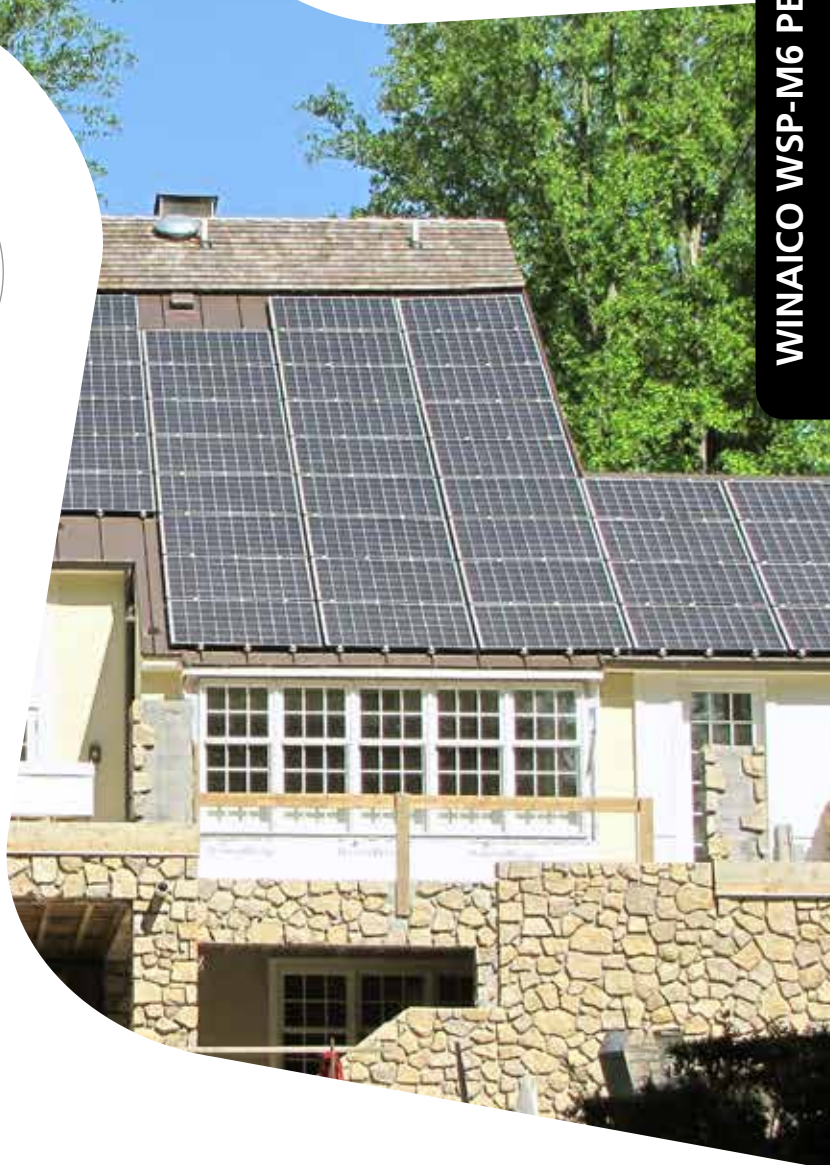
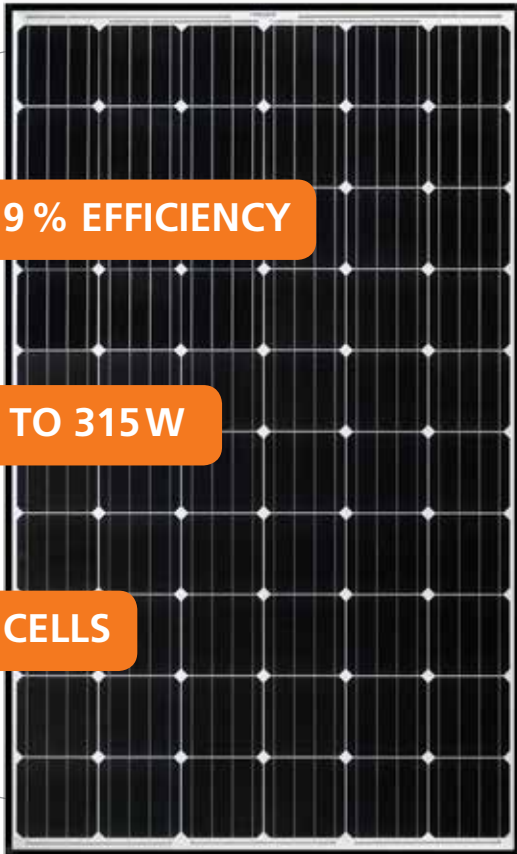
Power to Perform

WINAICO WSP-M6 PERC

18.9 % EFFICIENCY

UP TO 315W

60 CELLS



Solar Power World 2015 TOP SOLAR PRODUCTS



99% relative efficiency at weak-light  
Because a 3% increase in yield makes a difference.



25 year linear performance guarantee  
15 year product warranty.



Protection against the weather and the elements  
Because long term performance matters.



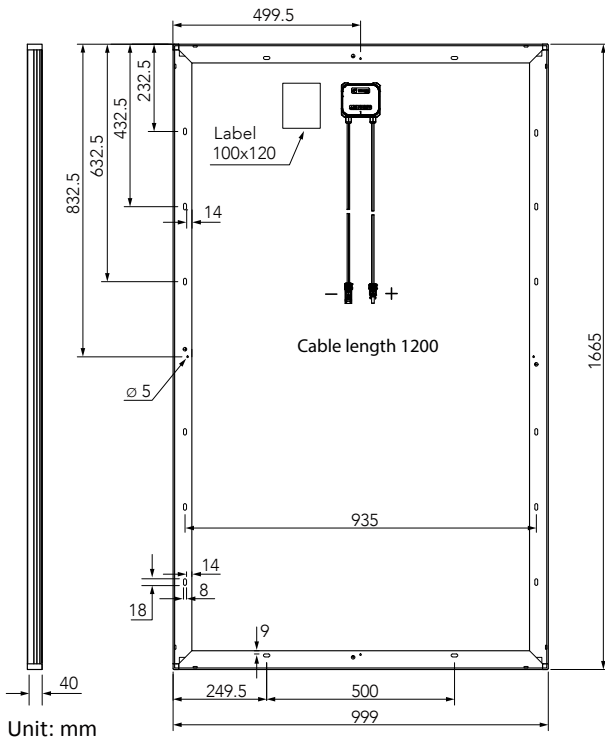
2 years of free insurance included  
Because you never know what tomorrow might bring.



Designed for fire safety  
Because plant fires mean more than financial losses alone.



Made in Taiwan  
Home of high precision semiconductor manufacturing.



Unit: mm

**Mechanical data**

Cell	Monocrystalline 156.75 x 156.75 mm silicon cells
Quantity and wiring of cells	60 in series
Dimensions	1,665 x 999 x 40 mm (65.55 x 39.33 x 1.57 in)
Weight	19.6 kg (43.2 lbs)
Glass thickness	3.2 mm (0.13 in)
Frame	Black anodised aluminium
Junction box	IP 67
Connector type	MC4 (PV-KBT4/PV-KST4) IP68; QC4.10 IP67
Module fire performance	Type 1

**Operating conditions**

Operating temperature	-40°C to +85°C -40°F to +185°F
Maximum system voltage IEC/UL	1,000V/1,000V
Maximum series fuse	20 A
Maximum load	5,400 Pa
Nominal operating cell temperature NOCT	45 ± 3°C
Temperature coefficient of P <sub>MAX</sub>	-0.43%/°C
Temperature coefficient of V <sub>OC</sub>	-0.29%/°C
Temperature coefficient of I <sub>SC</sub>	0.06%/°C

**Certifications**

IEC 61215, IEC 61730-1/-2, UL 1703 Ed. 3, MCS, CE

Electrical data (STC)		WSP-310M6	WSP-315M6	
Nominal performance	P <sub>MAX</sub>	310	315	Wp
Voltage at maximum performance	V <sub>MP</sub>	32.9	33.2	V
Current at maximum performance	I <sub>MP</sub>	9.42	9.48	A
Open circuit voltage	V <sub>OC</sub>	40.3	40.4	V
Short circuit current	I <sub>SC</sub>	10.1	10.2	A
Module efficiency		18.6	18.9	%
Power tolerance			-0/+5	W

Reduction in the module efficiency rating from 1,000W/m<sup>2</sup> to 200W/m<sup>2</sup>: < 4%. The electrical data applies under standard test conditions (STC): solar radiation 1,000W/m<sup>2</sup> with light spectrum AM 1.5, with cell temperature 25°C. Measurement tolerance of P<sub>MAX</sub> at STC: ±3%. Accuracy of other electrical data: ±10%.

Electrical data (NOCT)		WSP-310M6	WSP-315M6	
Nominal performance	P <sub>MAX</sub>	230	234	Wp
Voltage at maximum performance	V <sub>MP</sub>	30.2	30.5	V
Current at maximum performance	I <sub>MP</sub>	7.62	7.67	A
Open circuit voltage	V <sub>OC</sub>	38.1	38.2	V
Short circuit current	I <sub>SC</sub>	8.11	8.19	A

The electrical data applies under normal operating cell temperature (NOCT): solar radiation 800W/m<sup>2</sup>, AM 1.5, air temperature 20°C, wind speed 1 m/s.



This frame design, produced entirely from aluminium, guarantees maximum stability and protection against material fatigue. The rounded corners provide greater torsional stiffness and waterproofing in this critical area, where the material is at its weakest. In contrast to other corner connections that use mitred cuts or threaded connections, WINAICO's corner pieces guarantee the best possible transfer of tension across each section of the frame.



**WINAICO Australia Pty Ltd**  
 Tel + 61 2 8091 2771  
 australia@winaico.com  
 www.winaico.com  
 3/393 George Street, Sydney NSW 2000, Australia



WINAICO is a trademark of Win Win Precision Technology Co., Ltd.